

Veterinary & Animal Health

ANTIBODIES & ANTIGENS FOR COMMERCIAL
IMMUNOASSAY DEVELOPMENT



Veterinary health products including veterinary pharmaceuticals, biologicals and medicated feed additives (MFAs), have transformed the health and welfare of livestock and companion animals worldwide. In the animal companion sector, the range and complexity of animal health products continues to expand, encompassing anti-infectives, parasite controls, reproductive aids, metabolic drugs, antibiotics, vaccines, topical solutions, imaging diagnostics, as well as novel treatments for chronic conditions such as osteoarthritis, cardiovascular disease and cancer.

ANTIGENS & ANTIBODIES

CANINE



Description	Type	Application	Product Code
Canine Distemper Virus (CDV)			
Surface Envelope Antigen	MAb	ELISA, LF, IFA, pair	C86504M
Surface Envelope Antigen	MAb	ELISA, IFA, pair	C86801M
CDV	MAb	ELISA, LF, pair	C01986M
CDV	MAb	ELISA, LF, pair	C01987M
CDV	MAb	ELISA, LF, pair	C01988M
CDV	MAb	ELISA, LF, pair	C01989M
CDV	MAb	ELISA, LF, pair	C01990M
CDV	Ag (Native)	ELISA	A01726C
Coronavirus			
Coronavirus	Goat	ELISA, IEP, pair	C02011G
Coronavirus	MAb	ELISA, pair	C01998M
Coronavirus	MAb	ELISA, pair	C01999M
Nucleoprotein	MAb	ELISA, pair	C02000M
Nucleoprotein	MAb	ELISA, pair	C02001M
Nucleoprotein	MAb	ELISA, pair	C02009M

ANTIGENS & ANTIBODIES

CANINE *cont.*

Description	Type	Application	Product Code
Nucleocapsid	MAB	ELISA, LF, WB, pair	C02010M
Coronavirus	Ag (Native)	ELISA	A01730N
C-Reactive Protein			
CRP	MAB	ELISA, pair	M01345M
CRP	MAB	ELISA, WB	M01346M
CRP	MAB	ELISA, pair	M01347M
CRP	MAB	ELISA, pair	M01348M
CRP	Ag (Rec.)	ELISA, pair	R01772
Cystatin C			
Cystatin C	MAB	ELISA, pair	H01303M
Cystatin C	MAB	ELISA, pair	H01304M
Heartworm (<i>Dirofilaria immitis</i>)			
<i>D. immitis</i>	MAB	ELISA, pair	C01991M
<i>D. immitis</i>	MAB	ELISA, pair	C01992M
<i>D. immitis</i>	MAB	ELISA, pair	C01993M
<i>D. immitis</i>	MAB	ELISA, LF	MKZ30-487
<i>D. immitis</i>	PAb (Rabbit)	ELISA, pair	C01994R
Parvovirus			
Parvovirus	MAB	ELISA, LF	C02003M
Parvovirus	MAB	ELISA, LF	C02004M
Parvovirus	MAB	ELISA, LF, pair	C86004M
Parvovirus	MAB	ELISA, pair	C86005M
Parvovirus	Ag (Native)	ELISA	A01727C
VP2 Protein	Ag (Rec.)	ELISA, pair	R01770
pro-Brain Natriuretic Peptide, N-Terminal (NT-proBNP)			
N-Terminal, a.a. 40-50	MAB	ELISA	H01353M
N-Terminal, a.a. 64-72	MAB	ELISA	H01354M
Serum Amyloid A (SAA)			
SAA	MAB	ELISA, WB, pair	H01381M
SAA	MAB	ELISA, WB, pair	H01383M
SAA	MAB	ELISA, WB, pair	H01384M
SAA	MAB	ELISA, WB, pair	H01382M
SAA	MAB	ELISA, WB, pair	H01425M
SAA	MAB	ELISA, WB, pair	H01426M
SAA	MAB	ELISA, WB, pair	H01427M
SAA	MAB	ELISA, WB, pair	H01429M
SAA	MAB	ELISA, WB, pair	H01430M
SAA	Ag (Rec.)	ELISA, pair	R01771
Thyroid Stimulating Hormone (TSH)			
Beta subunit	MAB	ELISA, WB, pair	E01369M
Beta subunit	MAB	ELISA, WB, pair	E01370M
Thyroglobulin			
Thyroglobulin	Ag (Native)	ELISA	A01725C

Canine Distemper Virus

C01986M

C01988M

C01987M

C01988M

C01990M

C01989M

C86504M

C86801M

Coronavirus

C01998M

C01998M

C02000M

C02001M

C02010M

C02009M

C02009M

C20211G

C02010M

C20211G

C01999M

C01998M

CRP

M01347M

M01345M

R01772

M01348M

M01345M

R01772

Cystatin C

H01304M

H01303M

Heartworm

C01994R

C01991M

C01992M

C01992M

C01993M

C01992M

Parvovirus

C02003M

C02004M

C86005M

C86004M

R01770

Serum Amyloid A (SAA)

H01382M

H01384M

H01381M

H01383M

H01426M

H01425M

R01771

H01427M

H01425M

R01771

H01429M

H01384M

R01771

H01429M

H01383M

R01771

H01384M

H01430M

R01771

TSH

E01370M

E01369M



ANTIGENS & ANTIBODIES

BOVINE

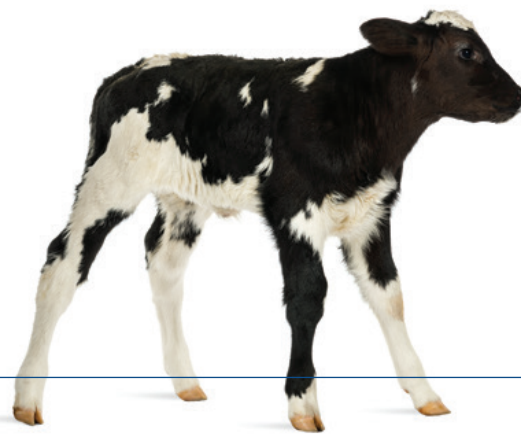


Description	Type	Application	Product Code
<i>Brucella abortus</i>			
Intact Cells	MAB	ELISA, WB	C86116M
Intact Cells	MAB	ELISA, WB	C86131M
Coronavirus, Bovine			
Surface Antigen (Peplomer)	MAB	ELISA, HI	C86540M
<i>Cryptosporidium parvum</i>			
Intact Oocysts	PAb (Goat)	ELISA, IFA	B65651G
Foot-and-mouth disease (FMD)			
Non-Structural Protein (NS)	MAB	ELISA	C01452M
Serotype O1	MAB	ELISA	C01448M
Nebraska Calf Diarrhea (NCDV, Rotavirus)			
NCDV p43 (vp6)	MAB	ELISA	C11222M
NCDV (all antigens)	PAb (Goat)	IFA	B65110G
NCDV	PAb (Goat)	IFA	B65213G
NCDV	PAb (Goat)	IFA	B65211G
NCDV	PAb (Goat)	IFA	B65212G
Low Density Lipoprotein (LDL)			
Ligand binding region within repeat #1	MAB	IFA, WB, FC	H44070M
Luteinizing Hormone (LH)			
LH (X-reacts with sheep, goat and deer)	PAb (Rabbit)	ELISA, IHC, WB	D01237R
<i>Trichomonas foetus</i>			
<i>T. foetus</i>	MAB	ELISA, IFA, pair	C01573M
<i>T. foetus</i>	MAB	ELISA, IFA, pair	C01572M

Antibody Pairs

Capture Antibody Detection Antibody

Trichomonas foetus — C01573M C01572M



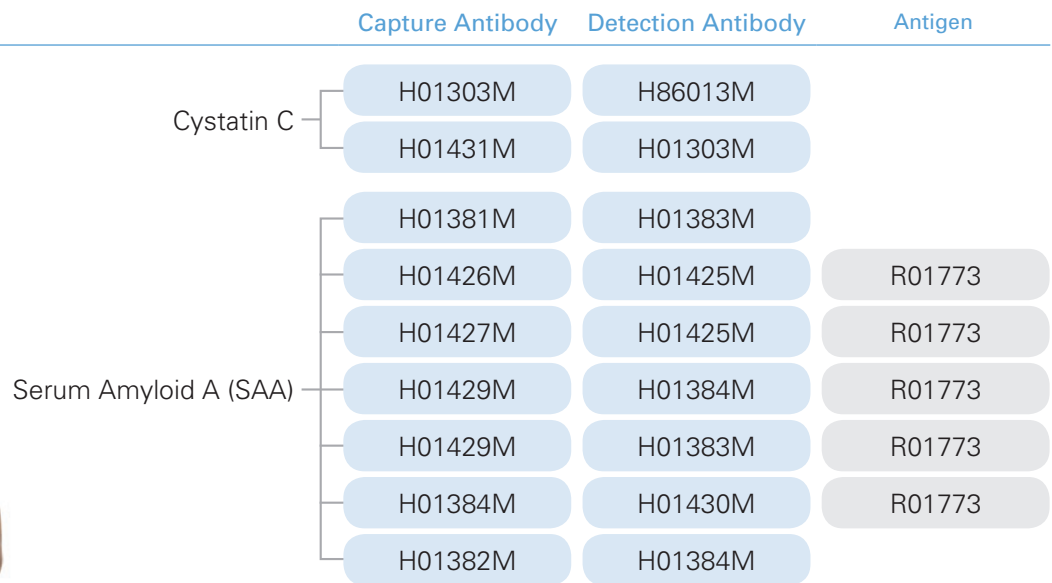
ANTIGENS & ANTIBODIES

EQUINE



Description	Type	Application	Product Code
Burkholderia (<i>Pseudomonas</i>) mallei			
Whole cells	MAb	Indirect ELISA	C01752M
LPS	MAb	ELISA, WB	C02021M
LPS	MAb	ELISA, WB	C86315M
Cystatin C			
Cystatin C	MAb	ELISA, pair	H01303M
Cystatin C	MAb	ELISA, pair	H86013M
Cystatin C	MAb	ELISA, pair	H01431M
Serum Amyloid A (SAA)			
SAA	MAb	ELISA, WB, pair	H01381M
SAA	MAb	ELISA, WB, pair	H01383M
SAA	MAb	ELISA, WB, pair	H01384M
SAA	MAb	ELISA, WB, pair	H01382M
SAA	MAb	ELISA, WB, pair	H01425M
SAA	MAb	ELISA, WB, pair	H01426M
SAA	MAb	ELISA, WB, pair	H01427M
SAA	MAb	ELISA, WB, pair	H01429M
SAA	MAb	ELISA, WB, pair	H01430M
SAA	Ag (Rec.)	ELISA, pair	R01773

Antigen & Antibody Pairs



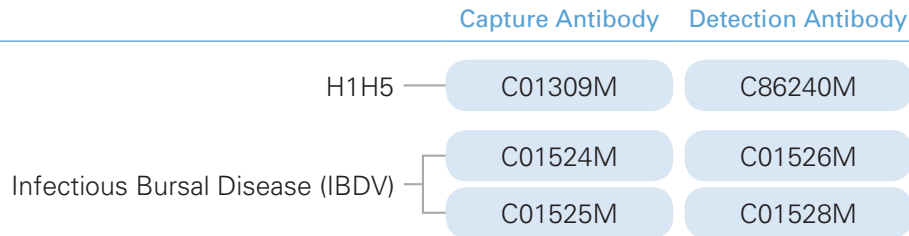
ANTIGENS & ANTIBODIES

AVIAN



Description	Type	Application	Product Code
Infectious Bronchitis Virus (IBV)			
Nucleoprotein	MAB	ELISA, WB	C01530M
Infectious Bursal Disease (IBDV)			
VP2 Protein	MAB	ELISA, WB, pair	C01524M
VP2 Protein	MAB	ELISA, WB, pair	C01526M
VP3 Protein	MAB	ELISA, WB, IHC, pair	C01525M
VP3 Protein	MAB	ELISA, WB, IHC, pair	C01528M
Influenza A H5 (H1H5)			
Hemagglutinin H5	MAB	ELISA, DB, HI, pair	C86240M
Hemagglutinin H5	MAB	ELISA, pair	C01309M
Influenza A H7 (H1H7)			
Hemagglutinin H7	MAB	ELISA, WB	C01610M
Hemagglutinin H7	MAB	ELISA, WB	C01611M
Marek Disease			
Serotypes 1, 2 & 3	MAB	ELISA	C01264M
Serotypes 1, 2 & 3	MAB	ELISA	C01267M
Serotypes 1, 2 & 3	MAB	ELISA	C01268M
Newcastle Disease Virus (NVD)			
HN Glycoprotein	MAB	ELISA, HI	C86012M
HN Glycoprotein	MAB	ELISA, HI	C86014M
HN Glycoprotein	MAB	ELISA, HI, WB	C86015M
HN Glycoprotein	MAB	ELISA, HI, WB	C86016M
HN Glycoprotein	MAB	ELISA, HI	C01351M
HN Glycoprotein	MAB	ELISA	C01352M
Ribonucleoprotein (RNP)	MAB	ELISA, IF, IHC	C01629M

Antibody Pairs



FELINE



Description	Type	Application	Product Code
Cystatin C			
Cystatin C	MAB	ELISA, pair	H01431M
Cystatin C	MAB	ELISA, pair	H01303M
Cystatin C	MAB	ELISA, pair	H86217M
Feline Immunodeficiency Virus (FIV)			
Core Antigen	Ag (Rec.)	ELISA, LF	R65360
FIV	Ag	ELISA	A01731F
Feline Leukemia Virus (FeLV)			
Glycoprotein 70 (gp70)	MAB	ELISA, IFA	C65712M
p27 Protein	MAB	ELISA, WB, pair	C01995M
p27 Protein	MAB	ELISA, WB, pair	C01996M

FELINE *continued*

Description	Type	Application	Product Code
p27 Protein	PAb (Goat)	WB	B65221G
p27 Protein	PAb (Goat)	ELISA, IFA, WB	C01997G
p27 Protein (a.a. 272 - 519)	Ag (Rec.)	ELISA, WB	R01776
Parvovirus			
Parvovirus	Ag (Lysate)	ELISA	A01728F
Serum Amyloid A (SAA)			
SAA	MAB	ELISA, WB, pair	H01381M
SAA	MAB	ELISA, WB, pair	H01383M
SAA	MAB	ELISA, WB, pair	H01425M
SAA	MAB	ELISA, WB, pair	H01426M
SAA	MAB	ELISA, WB, pair	H01427M
SAA	Ag (Rec.)	ELISA	R01774

Antigen and Antibody Pairs

	Capture Antibody	Detection Antibody	Antigen
Cystatin C	H01431M	H01303M	
	H01431M	H86217M	
Feline Leukemia Virus (FeLV)	C01996M	C01995M	
Serum Amyloid A (SAA)	H01381M	H01383M	
	H01426M	H01425M	R01774
	H01427M	H01425M	R01774

SWINE



Description	Type	Application	Product Code
Nipah Virus (NiV)			
G Protein	MAB	ELISA, pair	C01974M
G Protein	MAB	ELISA, pair	C01975M
G Protein	Ag (Rec.)	ELISA, pair	R01766
Porcine Epidemic Diarrhea Virus (PEDV)			
Nucleoprotein	MAB	ELISA, LF, WB, pair	C02005M
Nucleoprotein	MAB	ELISA, LF, WB, pair	C02006M
Nucleoprotein	Ag (Rec.)	ELISA, LF, WB	R01778
Transmissible Gastroenteritis Virus (TGV)			
Peplomer Protein	MAB	ELISA	C55802M
Peplomer Protein	MAB	ELISA	C55803M
African Swine Fever Virus (ASFV)			
p30	MAB	ELISA, IFA, IHC, IP, WB	C01881M
p30	Mab	ELISA, IFA, IHC, IP, WB	C01882M

NEW

Antigen & Antibody Pairs

	Capture Antibody	Detection Antibody	Antigen
Nipah Virus	C01975M	C01974M	R01766
Porcine Epidemic Diarrhea Virus (PEDV)	C02006M	C02005M	R01778

ANTIGENS & ANTIBODIES

MULTI-SPECIES



Description	Type	Application	Product Code
Adenovirus Hexon			
Suitable for use with dog, bovine, monkey and rat serum.			
Hexon Antigen	MAb	ELISA, IHC, ID, pair	C86804M
Hexon Antigen of 1, 5, 8 & 27	MAb, bclonal	ELISA, LF, pair	C86006M
Hexon Antigen of 1, 5, 8 & 27	MAb, bclonal	ELISA, ID, pair	C86007M
Borrelia (Lyme Disease)			
<i>B. burgdorferi garinii</i>	MAb	ELISA, IFA, WB	C86420M
<i>B. afzelii</i>	Ag (Lysate)	ELISA, WB	R14210
<i>B. afzelii</i> VlsE	Ag (Rec.)	ELISA, LF, CLIA, WB	R01609
<i>B. burgdorferi</i> VlsE, multi-epitope chimera	Ag (Rec.)	ELISA, DB, WB	R01523
<i>B. garinii</i> p14 antigen (flagellin)	Ag (Rec.)	ELISA, LF, CLIA, BD, WB	R01521
<i>B. garinii</i> VlsE	Ag (Rec.)	ELISA, LF, CLIA, WB	R01610
Cryptosporidium parvum			
<i>C. parvum</i>	MAb	ELISA, LF, WB, pair	C02007M
<i>C. parvum</i>	MAb	ELISA, LF, WB, pair	C02008M
Rabies			
Rabies	MAb	Virus Neut., ELISA, IHC, IFA	C86307M

Antibody Pairs

	Capture Antibody	Detection Antibody
Adenovirus	C86804M	C86006M
	C86007M	C86006M
<i>C. parvum</i>	C02008M	C02007M

